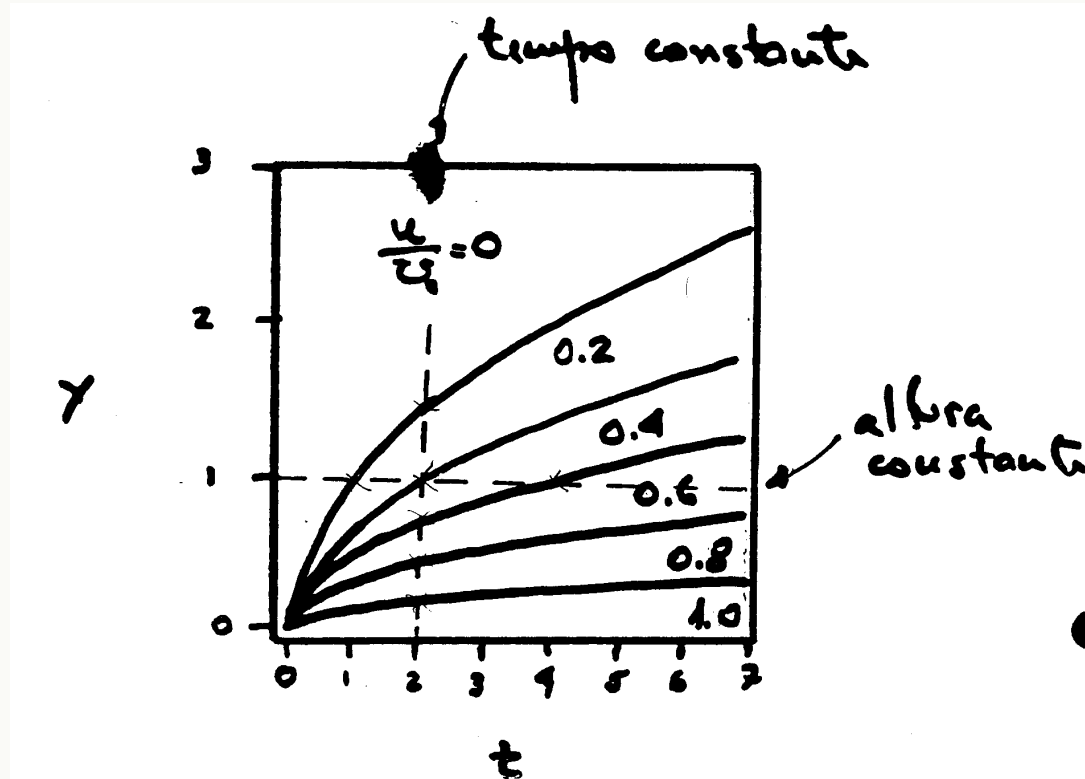


Escoamentos dominados pela Viscosidade



1º problema de Stokes:

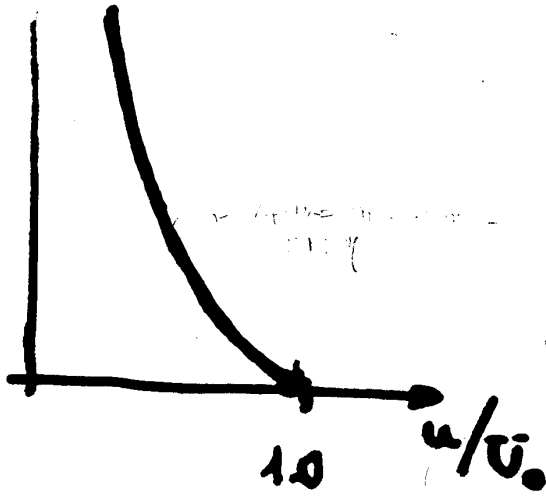
Placa plana infinita subitamente acelerada



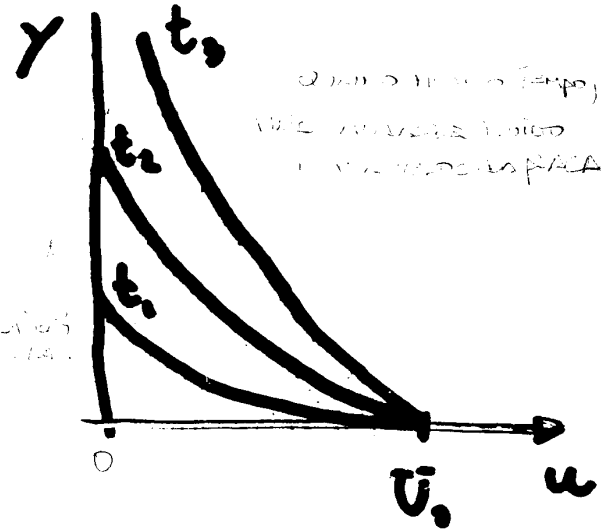
$$\frac{u}{u_0} = (1 - \text{Erf}(\frac{y}{2\sqrt{\nu t}}))$$

10

$$\frac{y}{2\sqrt{t}}$$



Domínio Transf.

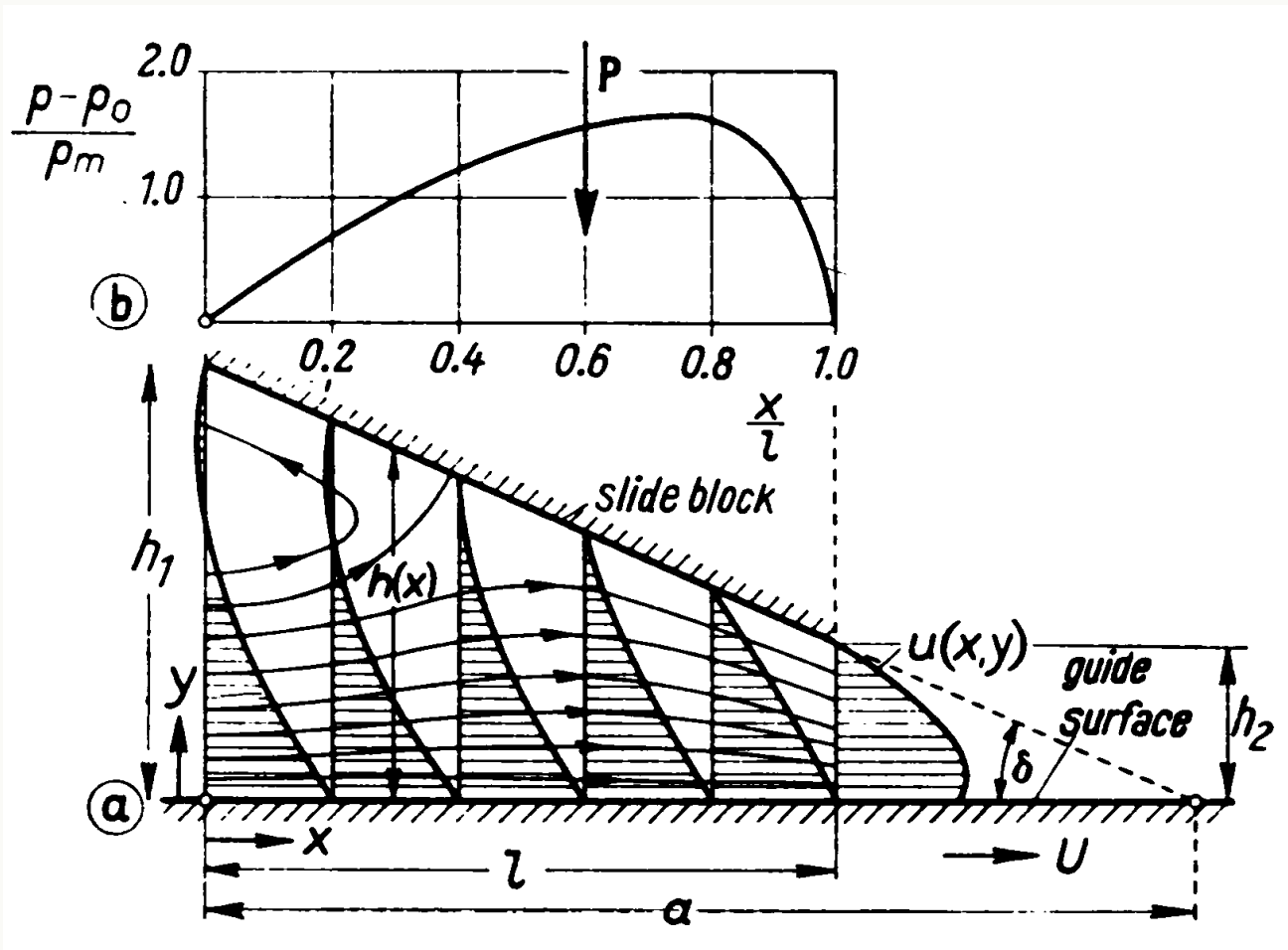


Domínio físico



Regime de Stokes (cont.)

Teoria Hidrodinâmica da Lubrificação



Conjunto Eixo-Mancal

